

Young harp seal, Long Island Sound

Long Island Sound Futures Fund 2023  
*Applicant Workshop – Connecticut*





# Agenda

1. Source of Funding
2. CCMP Principles, Theme & Implementation Actions
3. Boundaries & Project Types
4. Range of Funds
5. Grant Guidelines
6. Evaluation
7. Easygants
8. Tips & Resources
9. Timeline





# LISFF 2023 Sources of Funding

~\$10 million +!



NFWF



# CCMP Principles, Themes & Implementation Actions

**CCMP Cross cutting principles:** Resilience, Sustainability, Environmental Justice

## CCMP Themes...

**Clean Waters & Healthy Watersheds:** Improve wq by reducing nitrogen pollution, CSOs, impervious cover, stormwater and point sources of pollution.

- **Examples:** *Plans for or implementation of GI/LID, wastewater treatment onsite or retrofits at treatment facilities, Alternatives to current turf & landscaping management, marine debris & litter prevention, 9E plans, bioextraction, N reduction or prevention projects, Municipal Separate Storm Sewer System projects to address imperviousness and stormwater.* **Resource:** [Calculator Resources](#)

**Thriving Habitats & Abundant Wildlife:** Restore *Important Coastal Habitats of Long Island Sound with a strong focus on restoration of shellfish reef, beaches and dunes, tidal marsh, coastal forest and eelgrass.*

- **Examples:** *Plans for or implementation of habitat restoration or species conservation.* **Resources:** [Habitat Restoration Initiative](#) & [Habitat Restoration Guidelines](#)

## 2020–2024 Long Island Sound Comprehensive Conservation and Management Plan Update

This update contains new and revised Implementation Actions (IAs) for the 2020-2024 planning cycle. The full CCMP with the original IAs is at: [longislandconsolidated.net/2015/09/2015-comprehensive-conservation-and-management-plan/](https://longislandconsolidated.net/2015/09/2015-comprehensive-conservation-and-management-plan/)

# CCMP Principles, Themes & Implementation Actions

**CCMP Cross cutting principles:** Resilience, Sustainability, Environmental Justice

## CCMP Themes...

**Clean Waters & Healthy Watersheds:** Improve wq by reducing nitrogen pollution, CSOs, impervious cover, stormwater and point sources of pollution.

**Thriving Habitats & Abundant Wildlife:** Restore *Important Coastal Habitats of Long Island Sound with a strong focus on restoration of shellfish reef, beaches and dunes, tidal marsh, coastal forest and eelgrass.*

## 2020–2024 Long Island Sound Comprehensive Conservation and Management Plan Update

This update contains new and revised Implementation Actions (IAs) for the 2020-2024 planning cycle. The full CCMP with the original IAs is at: [longislandsoundstudy.net/2015/09/2015-comprehensive-conservation-and-management-plan/](https://longislandsoundstudy.net/2015/09/2015-comprehensive-conservation-and-management-plan/)



## CCMP Principles, Themes & Implementation Actions

**Sustainable & Resilient Communities:** 1) Sustain the ecological balance of the Sound in a healthy, productive and resilient state for the benefit of people, wildlife and the natural environment, and 2) Vibrant, informed and engaged communities that use, appreciate and help protect and sustain the Sound.

- **Resilient Communities Examples:** *Examples of project types and actions: Living shorelines, nature based infrastructure, green infrastructure, right-sizing stream-crossings or culverts, municipal, resilience/natural hazard mitigation plans, technical assistance to help local communities build capacity to plan for or to implement resilience project.*
- **Engagement & Education Examples:** *public stewardship, cleanups, EJ initiatives, public access, social marketing campaigns, landscaping guidance to reduce nitrogen, conservation related education or instruction **about LIS.***

**Resource:** [LISS Educational Resources.](#)

## 2020–2024 Long Island Sound Comprehensive Conservation and Management Plan Update

This update contains new and revised Implementation Actions (IAs) for the 2020-2024 planning cycle. The full CCMP with the original IAs is at: [longislandconsolidate.ny.gov/2015/09/2015-comprehensive-conservation-and-management-plan](https://longislandconsolidate.ny.gov/2015/09/2015-comprehensive-conservation-and-management-plan).

# CCMP Principles, Themes & Implementation Actions (Metrics)

**CCMP Implementation Actions:** Actions identified to carry out the CCMP themes.  
**Examples...**

**Theme: Clean Waters and Healthy Watersheds...WW-2:** Continue to collaborate with municipalities, local partners and stakeholders to strategically plan for and implement capital improvements, Best Management Practices (BMPs), and improved operation and maintenance to mitigate point and nonpoint source pollution loadings.

**How to identify CCMP Themes and Implementation Actions related to project activities?** *Resource: [LISFF Metrics and Implementation Action Tracking Guidance](#)*

THEME: CLEAN WATERS & HEALTHY WATERSHEDS - IMPLEMENTATION ACTION WW		
Potential CCMP Implementation Actions	Examples of Project Activities	List of Potential Project Metrics Depending upon Project Activities
<ul style="list-style-type: none"><li>• <b>WW-1:</b> Evaluate how drivers of pollutant loads and management responses will affect current and future pollutant loads from point and nonpoint sources.</li><li>• <b>WW-2:</b> Continue to collaborate with municipalities, local partners and stakeholders to strategically plan for and implement capital improvements, Best Management Practices (BMPs), and improved operation and maintenance to mitigate point and nonpoint source pollution loadings.</li><li>• <b>WW-4:</b> Pursue opportunities to further improve nitrogen removal</li></ul>	<ul style="list-style-type: none"><li>• Best Management Practice implementation for nitro-gen/nutrient reduction</li><li>• Best Management Practice implementation for P reduction</li><li>• Best Management Practice implementation for TSS reduction</li><li>• Erosion Control for nutrient or</li></ul>	<ul style="list-style-type: none"><li>• Lbs. N avoided annually</li><li>• Lbs. P avoided annually</li><li>• Lbs. of sediment avoided annually</li><li>• # septic system upgrades</li><li>• Volume of stormwater prevented</li><li>• Acres with BMPs</li><li>• Miles restored</li><li>• Volume of stormwater prevented</li><li>• Square miles restored</li></ul>

## 2020–2024 Long Island Sound Comprehensive Conservation and Management Plan Update

This update contains new and revised Implementation Actions (IAs) for the 2020-2024 planning cycle. The full CCMP with the original IAs is at: [longislandsoundstudy.net/2015/09/2015-comprehensive-conservation-and-management-plan/](https://longislandsoundstudy.net/2015/09/2015-comprehensive-conservation-and-management-plan/)

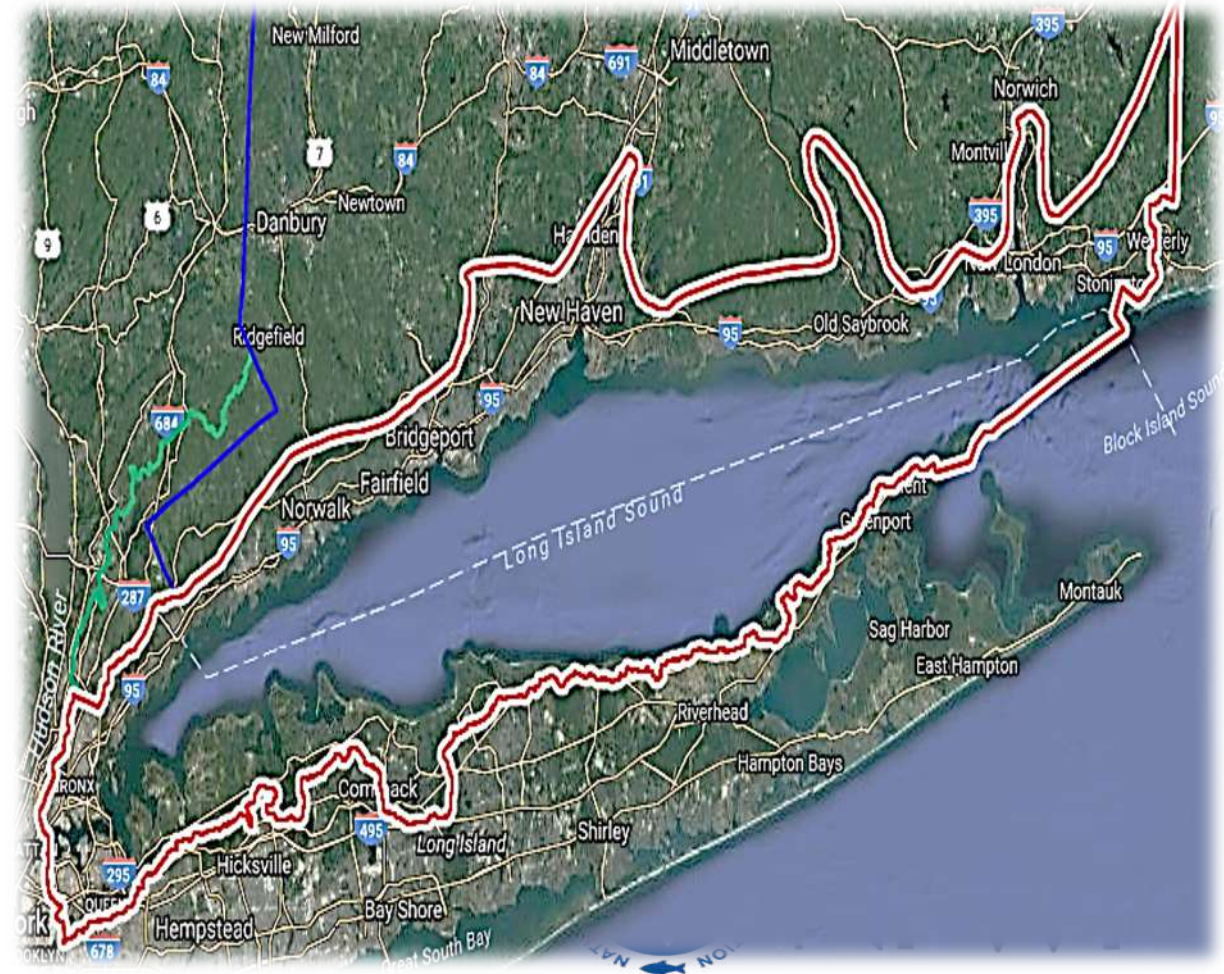


# Boundaries & Project Types

**Eligible: Resilience, Clean Water,  
Education, Riverine Migratory Corridors**



**Eligible: All LISFF Project Types  
Habitat Restoration, Species  
Conservation & Resilience**

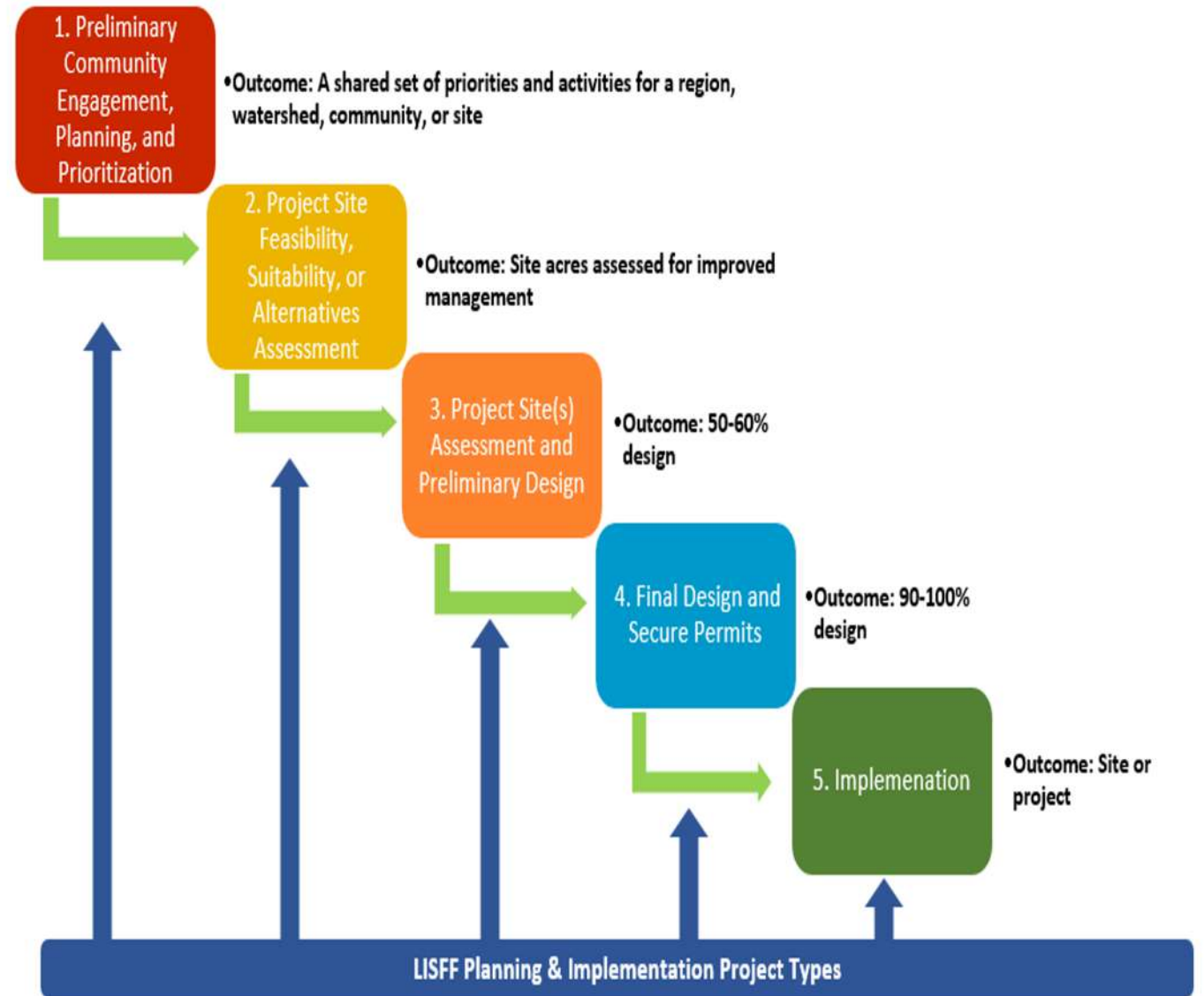




# Range of Funds for Grants

**Planning for:** Community Engagement, Prioritization, & Planning, (Feasibility/Suitability/Alternatives Assessment, Conceptual and final Design/Planning) \$50,000 to \$500,000

**Implementation:** \$50,000 to \$1.5m



# Grant Guidelines

## Project Performance Period

- Start w/in 6 months complete w/in 24 months after grant award
- Large-scale or particularly complex projects start w/in 6 months & complete w/in 36 months after grant award
- Grant award notice November 2023
- Project start date not before October 1, 2023

## Match

- **25% of Requested Amount from NFWF**
  - **Non-federal** cash funds and/or in-kind services
  - *Examples: In-kind contributions of staff/volunteer time, materials/services donated or other tangible contributions to the project*
  - May be from applicant or partners
  - Used during start and end date of LISFF grant
  - Relate to specific project being delivered
- **Eligible applicants** 501(c) organizations, state, local & municipal government, Tribal Governments & Organizations, and educational institutions





# Overall Evaluation Criteria

## All Proposals:

- Program Goals & Priorities = CCMP
- Technical Merit
- Community Impact
- Budget/Cost Effectiveness
- Match
- Long-term sustainability





## Project Examples



**Borough of Naugatuck, CT**, removing impervious pavement and constructing Low Impact Development and green infrastructure stormwater improvements downtown, **Grant: \$535,289**



NFWF



NFWF



Did you know water from this parking lot travels all the way to Long Island Sound?

These bioretention planters collect contaminated runoff from sidewalks and the parking lot. The bioretention system is comprised of engineered soil media, stone, and plants that filter out pollutants such as metals, nutrients, and bacteria.

This helps reduce flooding and cleanses storm water before it flows into surrounding water bodies, or makes its way back into the soil and recharges groundwater.



#### Clean

Uses plants and soils to filter out pollution.

#### Cool

Replaces hard surfaces that hold heat.



#### Protect

Absorbs rain and reduces flooding.

#### Wellness

Cleans our air and creates welcoming spaces.



#### Economy

Green stormwater infrastructure creates welcoming spaces for businesses and patrons, promoting economic growth.

#### Habitat

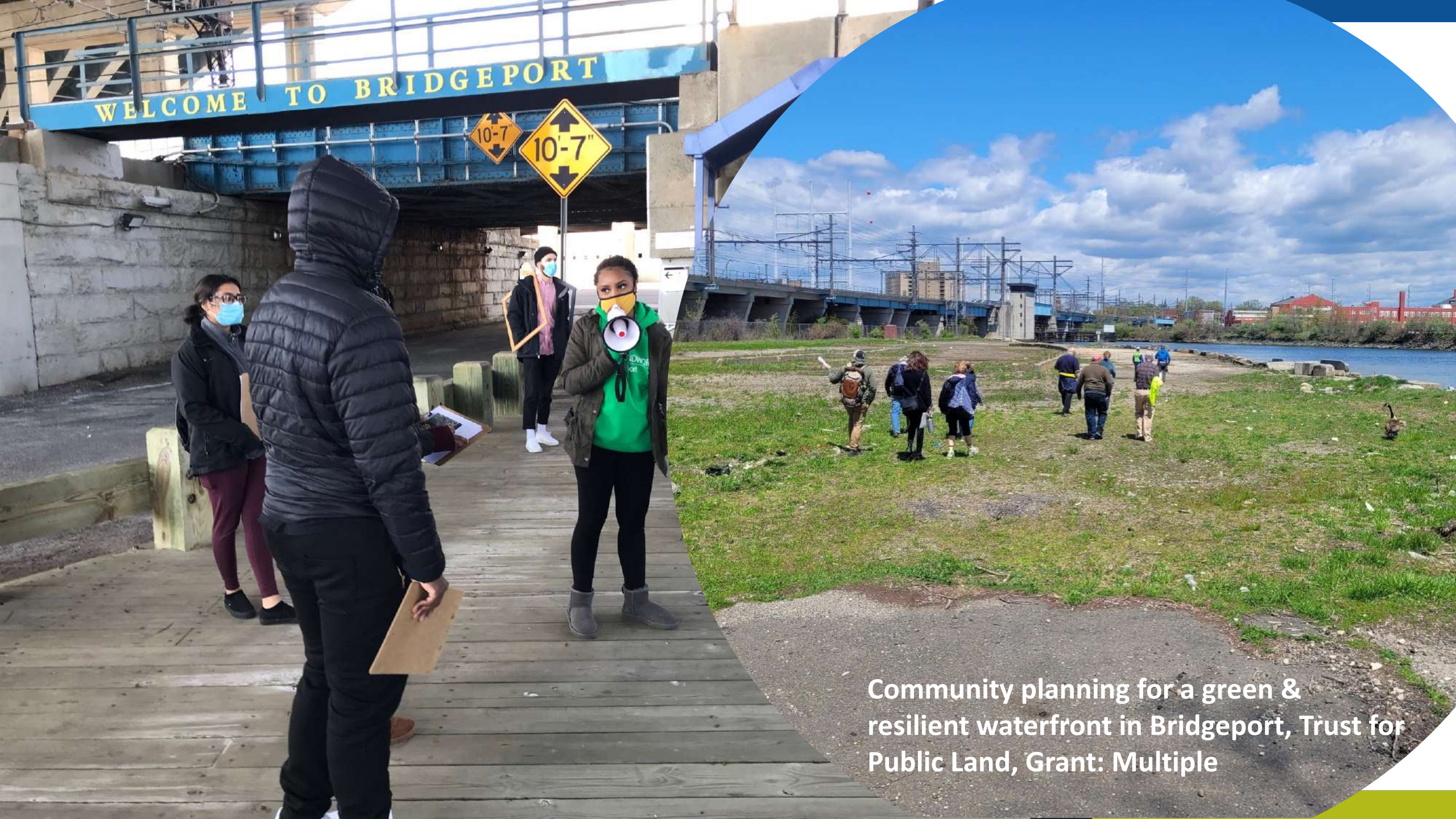
Attracts animals like birds, butterflies, and bees.



We were able to implement these green infrastructure improvements with funding provided by the Long Island Sound Futures Fund administered by the National Fish and Wildlife Foundation. These green strategies help provide cleaner water and healthier communities.

Green infrastructure and Low Impact Development to reduce stormwater pollution, Webster Street Lot, Norwalk, Grant: \$250,000





Community planning for a green & resilient waterfront in Bridgeport, Trust for Public Land, Grant: Multiple





**Assessing to improve fish passage at  
Whitford Brook and Alewife Cove Dams,  
Save the Sound**



**NFWF**





**Windham County Natural Resources Conservation District, VT, NH.** Identify practices, conduct trials and assess and monitor results to inform selection of BMPs to reduce N from farms. **Grant: \$418,596**





Engaging Student Citizen Scientists for Long Island Sound, Earthplace - The Nature Discover Center



Engaging Student Citizen Scientists for Long Island Sound, Citizens Campaign Fund for the Environment





Share the Shore with Shorebirds, CT  
Audubon Society, Audubon CT & NY






**Great Meadows Marsh Restoration,  
Aububon Connecticut**





Reef Balls for Nature-Based  
Restoration of Shorelines-  
Connecticut College



A photograph of a coastal restoration project. In the foreground, a large area of sand is covered with a grid of wooden stakes and sandbags, creating a living shoreline. The stakes are arranged in rows, and the sandbags are placed between them. In the background, a rocky shoreline meets the ocean under a clear blue sky. The text "A living shoreline to enhance coastal resilience, Fenwick, Connecticut River Conservancy" is overlaid on the right side of the image.

A living shoreline to enhance  
coastal resilience, Fenwick,  
Connecticut River Conservancy

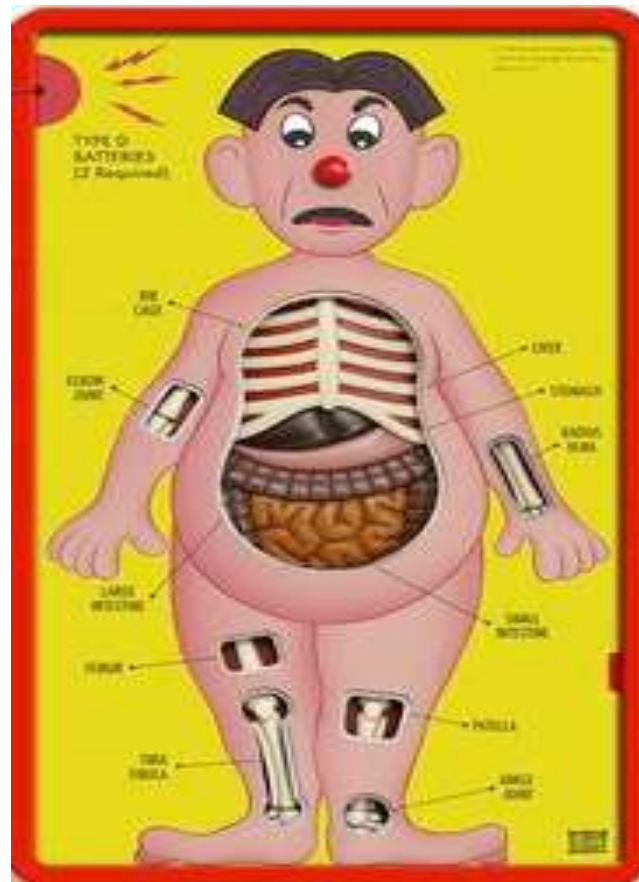




**Oyster Planting to Improve  
Water Quality & Improve  
Recruitment- Town of  
Brookhaven**



# Parts of a LISFF Proposal





# Project Budget

<u>Personnel</u>	
Personnel	\$0.00
<u>Travel</u>	
Domestic Airfare - Per Flight	\$0.00
International Airfare - Per Flight	\$0.00
Train - Per Ticket	\$0.00
Rental Car - Per Day	\$0.00
Taxis - Per Trip	\$0.00
Mileage - Per Mile	\$0.00
Gasoline - Per Gallon	\$0.00
Per Diem (M&IE) - Per Day	\$0.00
Lodging - Per Night	\$0.00
Meals (No M&IE) - Per Meal	\$0.00
<u>Equipment</u>	
Equipment	\$0.00
<u>Materials and Supplies</u>	
Materials and Supplies	\$0.00
<u>Contractual Services</u>	
Subcontract/Contract - Per Agreement	\$0.00
Subgrant - Per Agreement	\$0.00
<u>Other Direct Costs</u>	
Other Direct Costs	\$0.00
<u>Indirect Costs</u>	
Indirect Costs	\$0.00
<u>Total Direct Costs</u>	\$0.00
<u>Total Indirect Costs</u>	\$0.00
<u>Total Costs</u>	\$0.00

**TIP!** “Total Costs” on BUDGET page **MUST =** “Requested Amount” on PROJECT INFORMATION page

Project Information

Project Budget

Requested Amount \*

<u>Other Direct Costs</u>	\$0.00
Other Direct Costs	\$0.00
<u>Indirect Costs</u>	\$0.00
Indirect Costs	\$0.00
<u>Total Direct Costs</u>	\$0.00
<u>Total Indirect Costs</u>	\$0.00
<u>Total Costs</u>	\$0.00

**Indirect Cost Policy:**  
[nfwf.org/apply-grant/application-information/indirect-cost-policy](http://nfwf.org/apply-grant/application-information/indirect-cost-policy)



# Uploads. **Tip!** Collect Documents Early

Upload Type	Required	Template	File Types Allowed	Max Uploads	Max File Size	Max Pages	Max Words	Max Characters
LISFF Full Proposal Narrative 2020	Yes	LISFF Full Proposal Narrative Template 2020	.doc, .docx, .pdf, .rtf	No Limit	16 MB	12	No Limit	No Limit
Letters of Support	Yes		.xls, .doc, .pdf, .rtf, .gif, .jpeg, .jpg, .docx	No Limit	16 MB	No Limit	No Limit	No Limit
Conceptual Plans	No		.xls, .doc, .pdf, .rtf, .gif, .jpeg, .jpg, .docx	No Limit	16 MB	No Limit	No Limit	No Limit
Engineered Plans	No		.xls, .doc, .pdf, .rtf, .gif, .jpeg, .jpg, .docx	No Limit	16 MB	No Limit	No Limit	No Limit
Photos - Jpeg	No		.jpeg, .jpg	No Limit	16 MB	No Limit	No Limit	No Limit
Statement of Litigation	Yes	Statement of Litigation	.doc, .docx, .pdf, .rtf	No Limit	16 MB	6	No Limit	No Limit
Board of Trustees, Directors, or equivalent	Yes		.doc, .docx, .pdf, .rtf	No Limit	16 MB	No Limit	No Limit	No Limit
GAAP audited financial statements	Yes		.xls, .doc, .pdf, .rtf, .gif, .jpeg, .jpg, .docx, .xlsx	No Limit	16 MB	No Limit	No Limit	No Limit
IRS Form 990	Yes		.xls, .doc, .pdf, .rtf, .gif, .jpeg, .jpg, .docx	No Limit	16 MB	No Limit	No Limit	No Limit
A-133 Audit	Yes		.xls, .doc, .pdf, .rtf, .gif, .jpeg, .jpg, .docx	No Limit	16 MB	No Limit	No Limit	No Limit
Indirect Rate Agreement	No		.xls, .doc, .pdf, .rtf, .gif, .jpeg, .jpg, .docx	No Limit	16 MB	No Limit	No Limit	No Limit
Other Documents	No		.doc, .docx, .gif, .jpeg, .jpg, .pdf, .ppt, .pptx, .rtf, .xls, .xlsx	No Limit	16 MB	No Limit	No Limit	No Limit

 Uploads

Choose Upload Type

 Add files...

 Start upload

 Cancel upload

There are no grant documents attached.

Continue



# Tips for Preparing a Competitive Proposal

## Read the RFP & associated documents

- ✓ Consider requirements in terms of organizational capacity/needs
- Guidance: Review “Other” section RFP e.g., Compliance, Procurement, Quality Assurance.... “Ineligible Uses of Grant Funds” e.g., food, educational curriculum...

## Sharply focus proposal narrative

- ✓ Priorities, problem, solution qualifications, community impact, sustainability
  - ✓ Add a third-party reader
  - Guidance: Full Proposal Tip Sheet
  - Guidance: Metrics and Implementation
- Action Tracking Guidance

## Gather relevant letters of support/photos/plans/permission

- Guidance: Letters of Support Best Practices





# Resources @ nfwf.org/lisff

## RFP & associated documents

- Guidance: Review “Other” section RFP e.g., Compliance, Procurement, Quality Assurance.... “Ineligible Uses of Grant Funds”

## Proposal narrative

- Guidance: Metrics and Implementation Action Tracking Guidance

## Letters of support/photos/plans/permission

- Guidance: Letters of Support Best Practices

## Budget

- Guidance: Detailed Budget Instructions
- Guidance: Full Proposal Tip Sheet
- Guidance: “Help” function in Easygrants

## Metrics & Link to CCMP

- Guidance: Calculator Resources
- Guidance: Metrics and Implementation Action Tracking Guidance

## Online System

- Guidance: Full Proposal Tip Sheet
- Guidance: “Help” function in Easygrants
- Guidance: Problems with Easygrants - [easygrants@nfwf.org](mailto:easygrants@nfwf.org)



And...Throwe Environmental [kyle@throwe-environmental.com](mailto:kyle@throwe-environmental.com)...Feedback!





## Timeline

Proposal idea feedback *no later than*  
Wednesday, April 14<sup>nd</sup>

RFP open [nfwf.org/lisff](https://nfwf.org/lisff) under  
“Application Information” tab

**Proposals Due**  
**Thursday, May 10<sup>th</sup> 11:59PM EST!!**

Review Summer/Fall 2023

Awards announced November 2023





# Consider Other NFWF Funding Programs in New Hampshire

Northeastern Forests and Rivers  
Fund  
America the Beautiful  
National Coastal Resilience Fund



# QUESTIONS?

